

# Kelly Bayer Rosmarin

**Commonwealth Bank Group Executive  
Institutional Banking and Markets**



A stylized, abstract map graphic is located on the left side of the slide. It features various geometric shapes, lines, and colors (blue, orange, brown, grey) representing streets, buildings, and landmarks. A circular icon with an arrow pointing up and to the right is also visible.

# **Disruption**

**To throw into confusion or disorder**

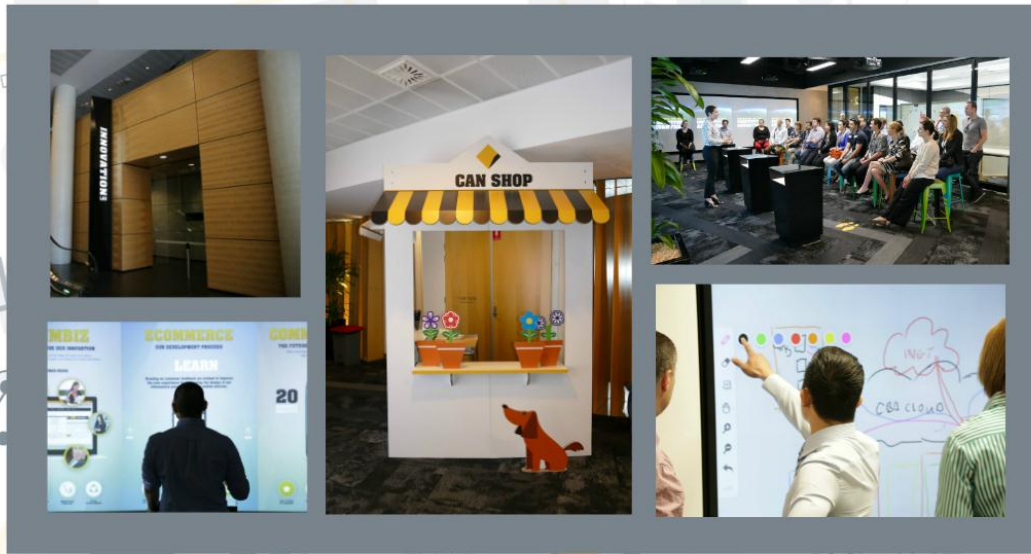
# **Innovation**

**Fresh thinking that creates value**

# 30 years...



# Innovation Lab





**Crypto Currencies**

**Cognitive Computing**

**Cyber Crime**

**Crypto Currencies**

Bitcoin

CAN

CAN

**Cognitive Computing**



**Cyber Crime**



# Crypto Currencies

Global

**\$780**  
trillion

Australia

**\$15**  
trillion

CBA

**\$3**  
trillion

Bitcoin

**\$18**  
billion



Prezi



**Global**

**\$780**  
trillion

**Australia**

**\$15**  
trillion

**CBA**

**\$3**  
trillion

**Bitcoin**

**\$15**  
billion



# CAN



Prezi





TYME  
WE

TAKE YOUR  
MONEY  
EVERYWHERE

**WELCOME TO**



VIDEO NOT AVAILABLE





# **Crypto Currencies**

# **Cognitive Computing**

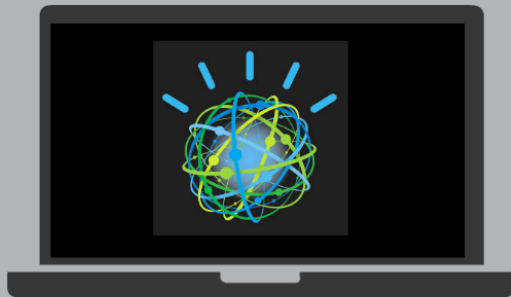
# **Cyber Crime**

**Crypto Currencies**

**Cognitive Computing**

**Cyber Crime**

# Cognitive Computing







VIDEO NOT AVAILABLE



**Crypto Currencies**

**Cognitive Computing**

**Cyber Crime**

**Crypto Currencies**



**Cognitive Computing**



**Cyber Crime**



The background features a complex pattern of overlapping geometric shapes, including squares, rectangles, and lines, in shades of blue, yellow, and brown. Two large, stylized arrows, one pointing right and one pointing left, are positioned above the central text box.

# **Disruption**

**To throw into confusion or disorder**

# **Innovation**

**Fresh thinking that creates value**